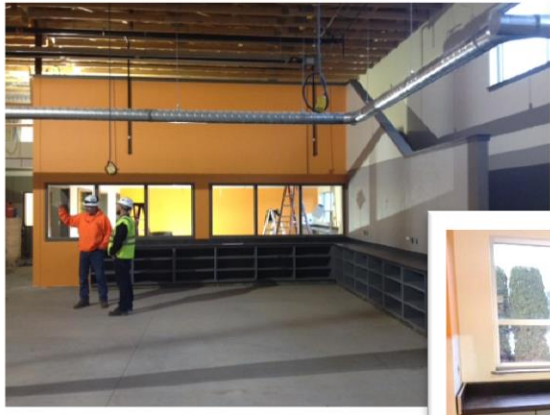


Sherman County School District "Builds" Opportunities for Student Success



WORKING TOGETHER TO PUT STUDENT SUCCESS FIRST



Left & Below:
James Weir
Agricultural Science and
Technology Center



Left: Kitchen



Above: Phase II Site Work

Communication to the Community

Issue #5

From Sherman County
School District
Moro, Oregon

December 15, 2015

As we are nearing the end of 2015, I am excited to share an update regarding the progress of Phase I and Phase II of the Comprehensive PK-12 Facility Project in Moro. In the James Weir Agricultural Science and Technology Center, the final details are being completed and the project is starting to resemble a finished product. The vast majority of the painting work and cabinet installation is complete and the windows have been installed. On December 28, we are planning to move the equipment from the old building to the new facility. Very soon the students, staff and school community will be enjoying a beautiful facility that will provide outstanding educational opportunities.

In the new kitchen, the hood and walk-in cooler have been installed and this week the fiberglass reinforced panels will be fitted. The new refrigeration unit is beautiful and will provide a much needed enhancement to our Food Services Program.

Currently KNCC is working hard with the ongoing work of Phase II. The sidewalks around the back of the school are formed and are ready for concrete to be poured. The Phase II foundations are currently being constructed. These footings are an integral part of the foundation for Phase II. In addition, the final color and carpet selections have been made for Phase II and have been approved by the Design Committee.

If you have any questions or would be interested in a tour, please contact me at (541) 565-3500, (541) 333-2250 or wowens@sherman.k12.or.us. I wish you and your loved ones a happy Holiday Season and wonderful New Year. Thank you for your support of the Sherman County School District.

Happy Holidays!

Wes Owens
Superintendent